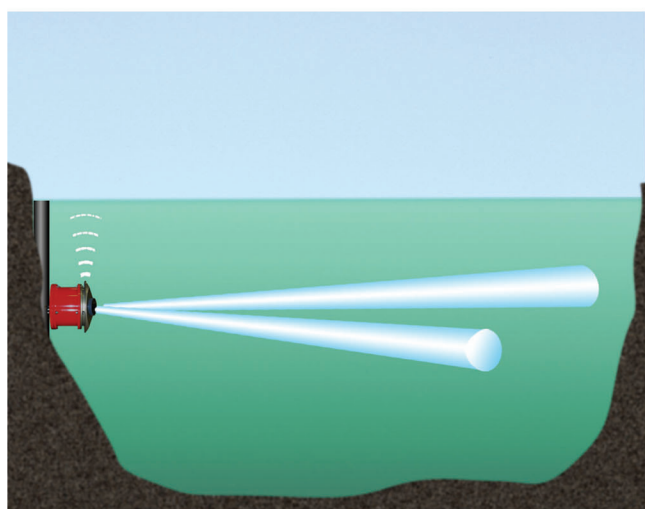


FlowQuest 600H & 1000H

Horizontal Acoustic Current Profilers



- **Real-time Flow, Current And Water Level Measurement**
- **Range Up To 120 Meters**
- **600 kHz & 1 MHz Operating Frequency**
- **Highly Robust Acoustic Doppler Technology**
- **Significantly Longer Range When Compared Against Similar Products**
- **Highly User Friendly And Cost Competitive**
- **Depth Rating 80 Meters. All Components Water Sealed**
- **Low Power Consumption DSP Technology**



FlowQuest 600H & 1000H Horizontal Acoustic Current Profilers precisely measure water velocities and water levels in horizontally-oriented installations. They can be easily installed on an irrigation channel bank, a bridge abutment or a river bank. With significantly longer range, high accuracy and highly competitive cost, the FlowQuest 600H & 1000H systems are the perfect choice for long-term real-time monitoring of water flow, velocities and levels in water channels, rivers, ports, harbors and estuaries.

LinkQuest Inc.

6749 Top Gun Street, San Diego, CA 92121, USA
Tel: (858) 623-9900, 623-9916 Fax: (858) 623-9918
sales@link-quest.com <http://www.link-quest.com>



FlowQuest 600H & 1000H

Horizontal Acoustic Current Profiler Specification

Water Profiling Range and Depth

Model	FlowQuest 600H	FlowQuest1000H
Frequency	600 kHz	1 MHz
Maximum Range	120 m	50 m
Maximum Cell size	4 m	2 m
Standard Depth	80 m	80 m
Maximum Transmit	50 watts	20 watts
Blank Distance	0.4 m	0.25 m

Velocity Specifications

Model	FlowQuest 600H	FlowQuest1000H
Accuracy	0.25% ± 2.0 mm/s	0.25% ± 2.0 mm/s
Cell size	0.5 – 4.0 m	0.25 – 2.0 m
Maximum Water Velocity	20 knots	20 knots
Number of Cells	170	170
Maximum Ping Rate	2/second	5/second

Hardware

Transducer: 3 Beam Convex

Transducer Beam Angle: 22 degrees

Housing: Anodized Aluminum and Plastics

Communication: RS422 or RS232

Weight and Dimension

Model	FlowQuest 600H	FlowQuest1000H
Transducer Assembly Diameter	26.5 cm	23 cm
Housing Diameter	20 cm	20 cm
Overall Length	25 cm	20 cm
Weight In Air	9.9 kg	9.0 kg
Weight In Water	4.4 kg	4.0 kg

Standard Sensors

Tilt (pitch and roll) ±0.5° up to ±15°

Software

Windows FlowQuest Studio software for real-time current and flow monitoring and off-line data analysis and display.

Surface Tracking For Water Level Measurement

Model	FlowQuest 600H	FlowQuest1000H
Frequency	600 kHz	1 MHz
Maximum Altitude	20 m	20 m
Minimum Altitude	0.4 m	0.2 m
Accuracy	±0.1% ± 2.5 mm	±0.1% ± 2.5 mm

Interface

RS422 or RS232 serial communication

LinkQuest Inc.

6749 Top Gun Street, San Diego, CA 92121, USA
Tel: (858) 623-9900, 623-9916 Fax: (858) 623-9918
sales@link-quest.com http://www.link-quest.com